

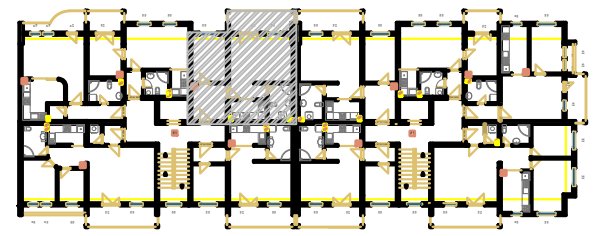
PD 66-prizemlje  
Zgrada 1, UL B

Stambena jedinica-DVOSOBAN STAN- PD 66

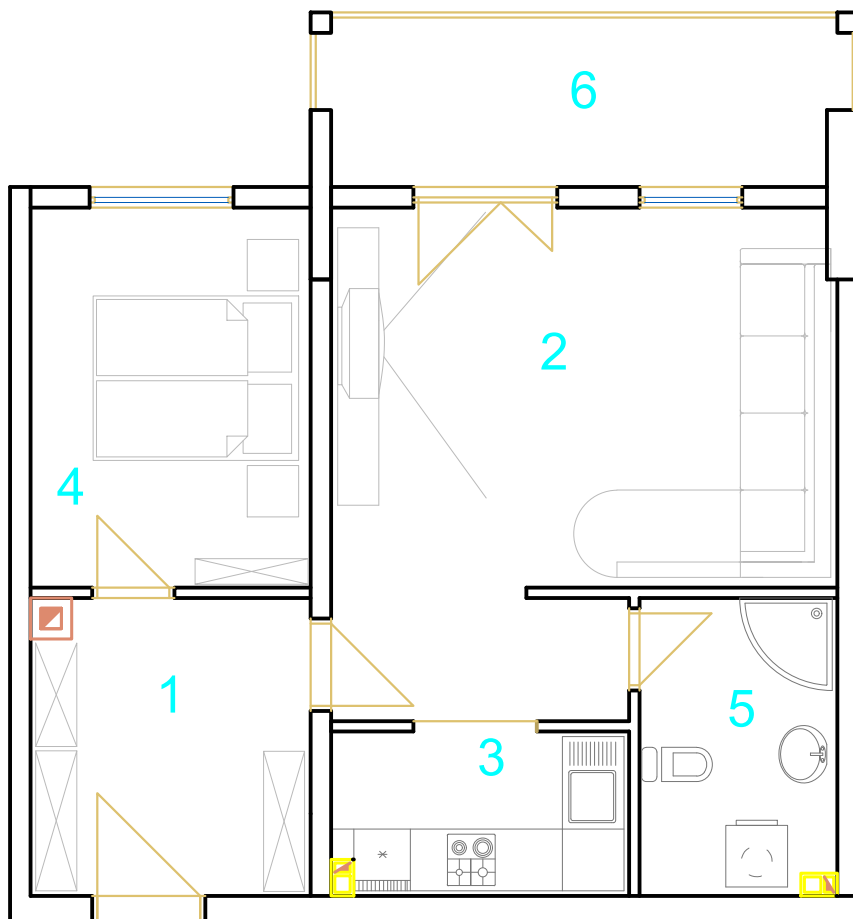
prostorija		povrsina/m2
1	Ulaz	10,91
2	Dn. boravak+trp.	26,68
3	Kuhinja	6,03
4	Spavaca soba	16,09
5	Spavaca soba	9,27
6	Kupatilo	4,63
7	Terasa	6,50
8	Terasa	6,64

UKUPNO NETO: 78.00m2

PD 66



PD 72-I SPRAT  
Zgrada 1, UL B

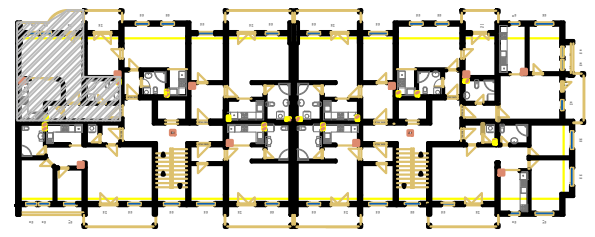


Stambena jedinica-JEDNOSOBAN STAN- PD 72

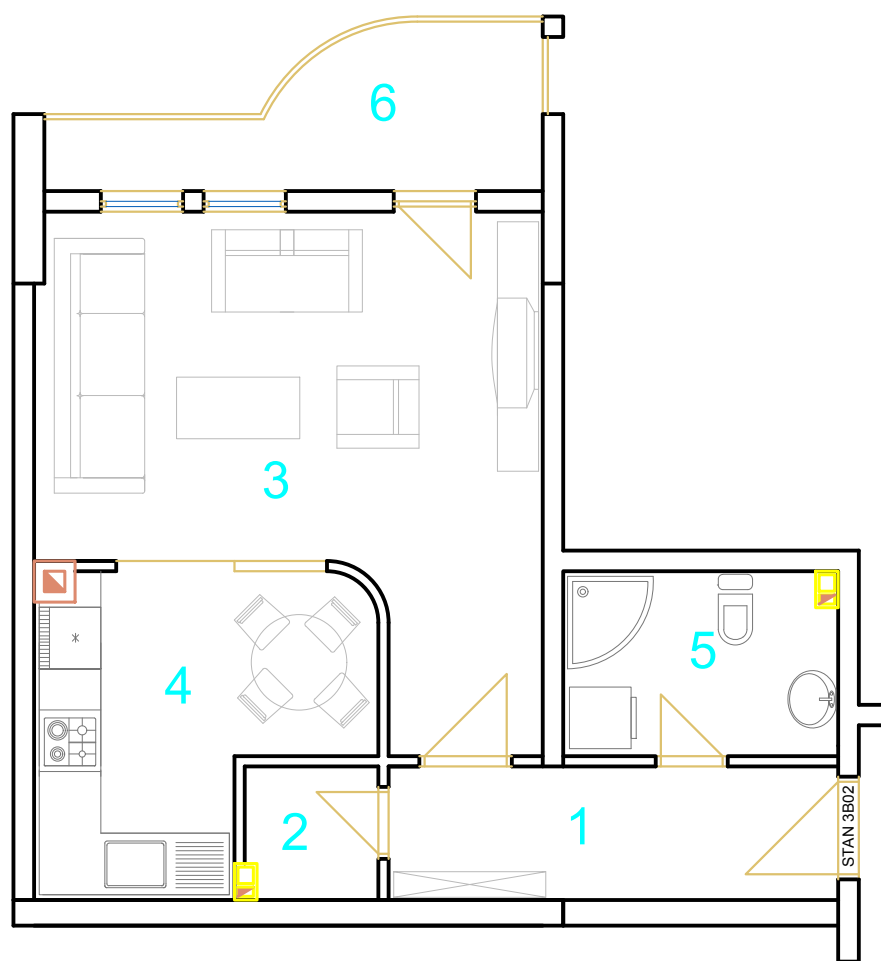
	prostorija	povrsina/m2
1	Ulaz	7,53
2	Dn. boravak	22,58
3	Kuhinja	5,27
4	Spavaca soba	8,72
5	Kupatilo	6,25
6	Terasa	8,32

UKUPNO NETO: 59.00m2

PD 72



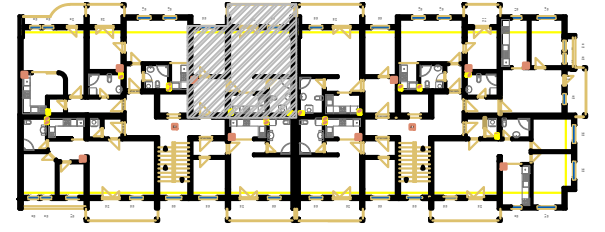
PD 78-III SPRAT  
Zgrada 1, UL B



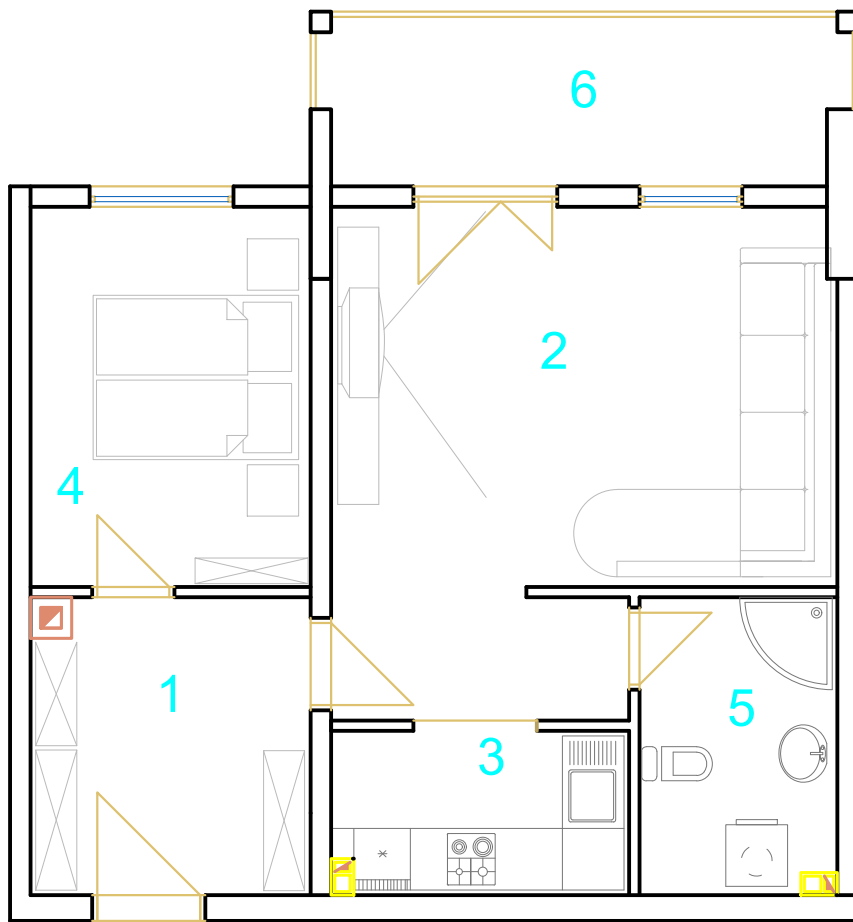
Stambena jedinica-GARSONJERA- PD 78

	prostorija	povrsina/m2
1	Ulaz	5,7
2	Ostava	1,7
3	Dn. boravak	19,7
4	Kuhinja	8,56
5	Kupatilo	4,8
6	Terasa	5,5

UKUPNO NETO: 47.00m2



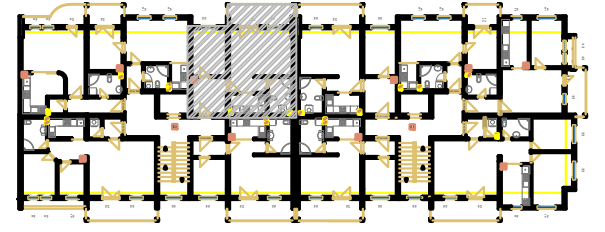
PD 82-III SPRAT  
Zgrada 1,UL B



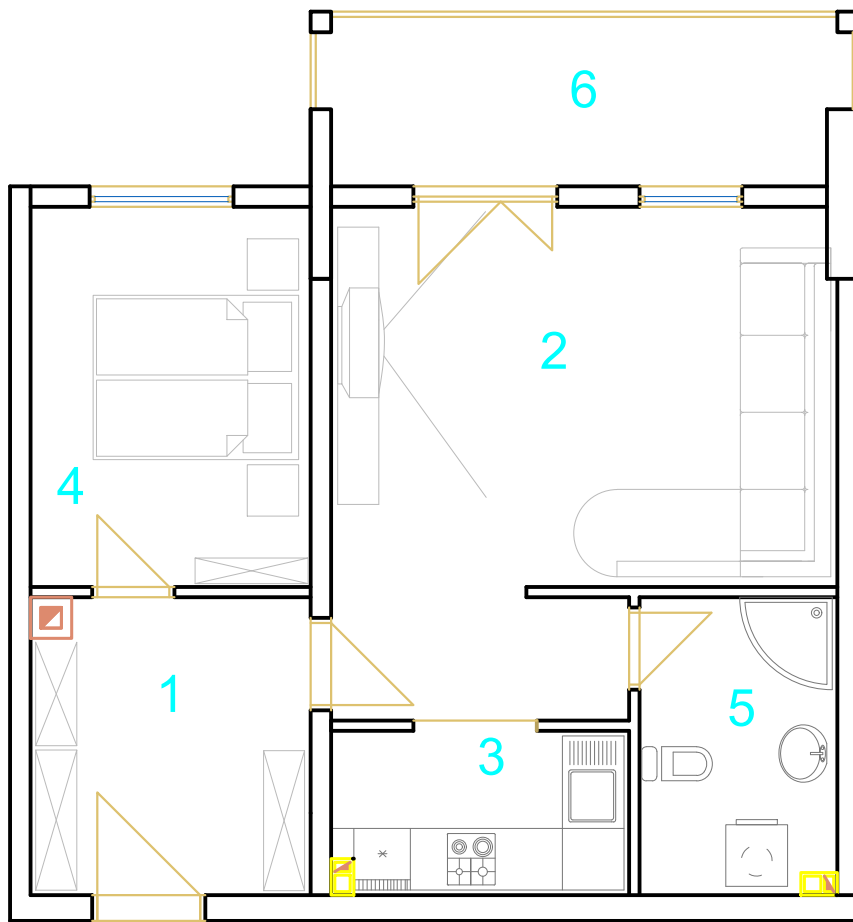
Stambena jedinica-JEDNOSOBAN STAN- PD 82

	prostorija	povrsina/m2
1	Ulaz	7,53
2	Dn. boravak	22,58
3	Kuhinja	5,27
4	Spavaca soba	8,72
5	Kupatilo	6,25
6	Terasa	8,32

UKUPNO NETO: 59.00m2



PD 92-V SPRAT  
Zgrada 1,UL B

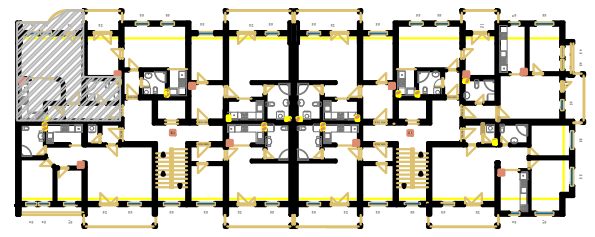


Stambena jedinica-JEDNOSOBAN STAN- PD 92

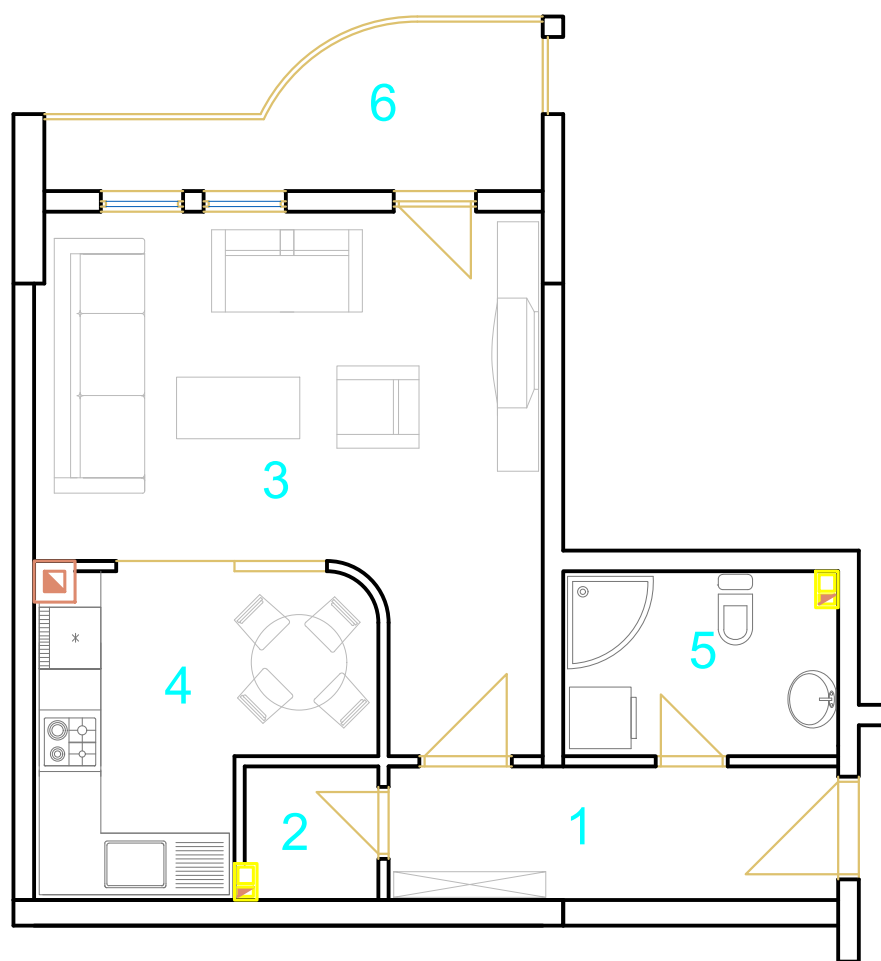
	prostorija	povrsina/m2
1	Ulaz	7,53
2	Dn. boravak	22,58
3	Kuhinja	5,27
4	Spavaca soba	8,72
5	Kupatilo	6,25
6	Terasa	8,32

UKUPNO NETO: 59.00m2

PD 92



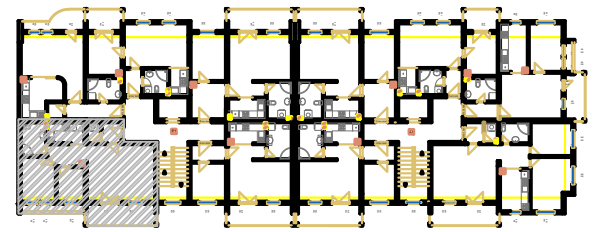
PD 93-VI SPRAT  
Zgrada 1, UL B



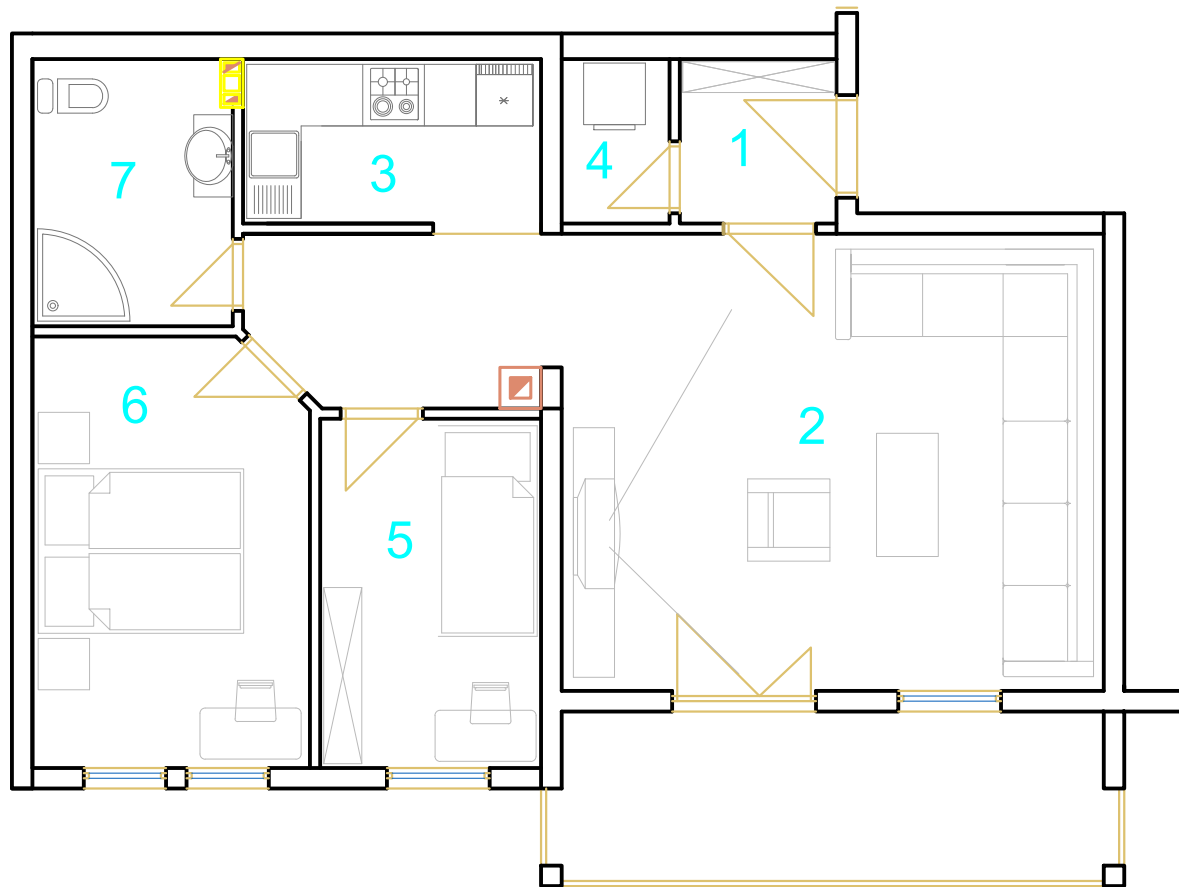
Stambena jedinica-GARSONJERA- PD 93

	prostorija	povrsina/m2
1	Ulaz	5,7
2	Ostava	1,7
3	Dn. boravak	19,7
4	Kuhinja	8,56
5	Kupatilo	4,8
6	Terasa	5,5

UKUPNO NETO: 47.00m2



PD 95-VI SPRAT  
Zgrada 1, UL B



Stambena jedinica-DVOSOBAN STAN- PD 95

	prostorija	povrsina/m2
1	Ulaz	2,4
2	Dn. boravak	28,2
3	Kuhinja	4,64
4	WC	1,62
5	Spavaca soba	7,3
6	Spavaca soba	11,08
7	Kupatilo	5,03
8	Terasa	8,9

UKUPNO NETO: 69.00m2

PD 95