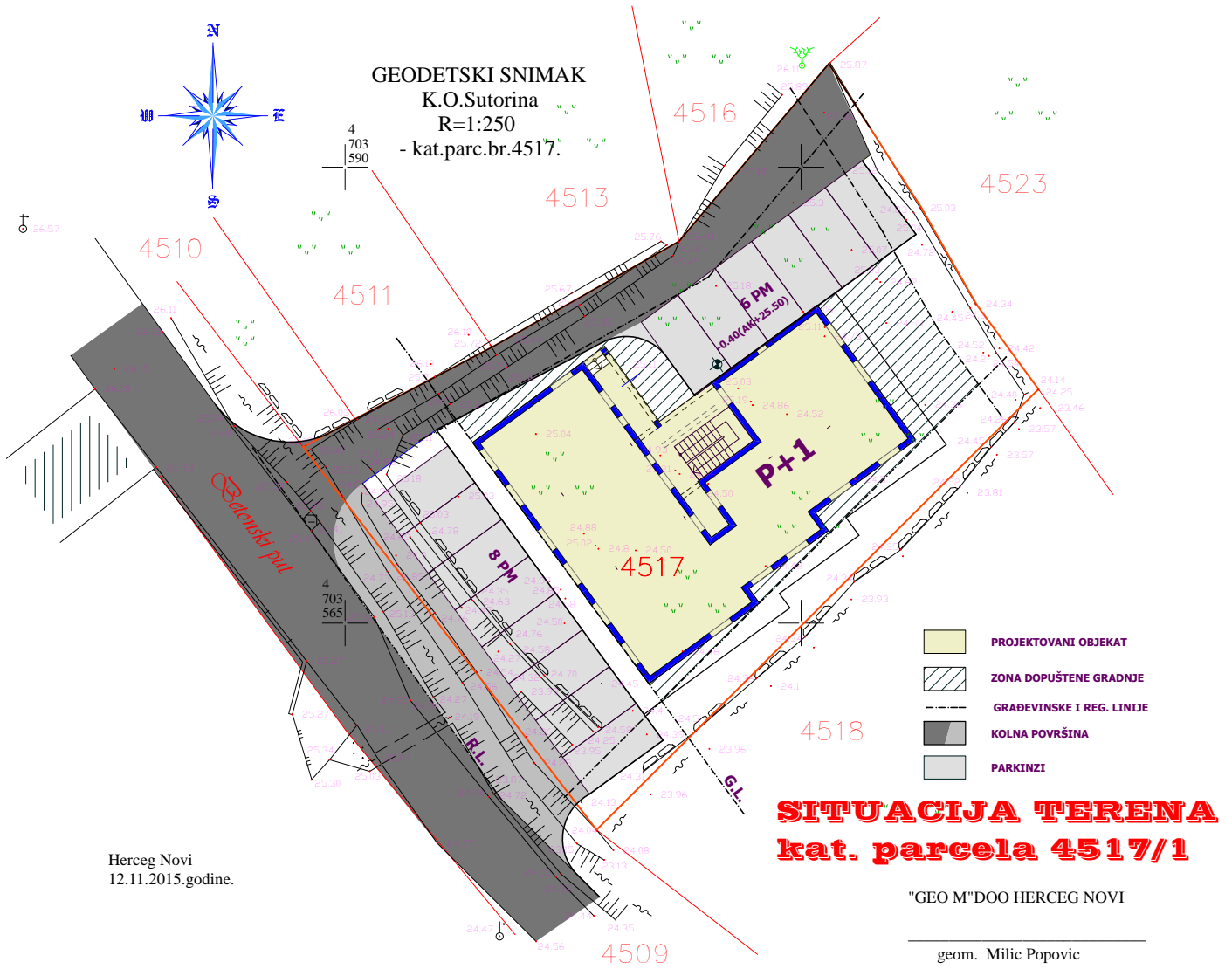


KATALOG STANOVA

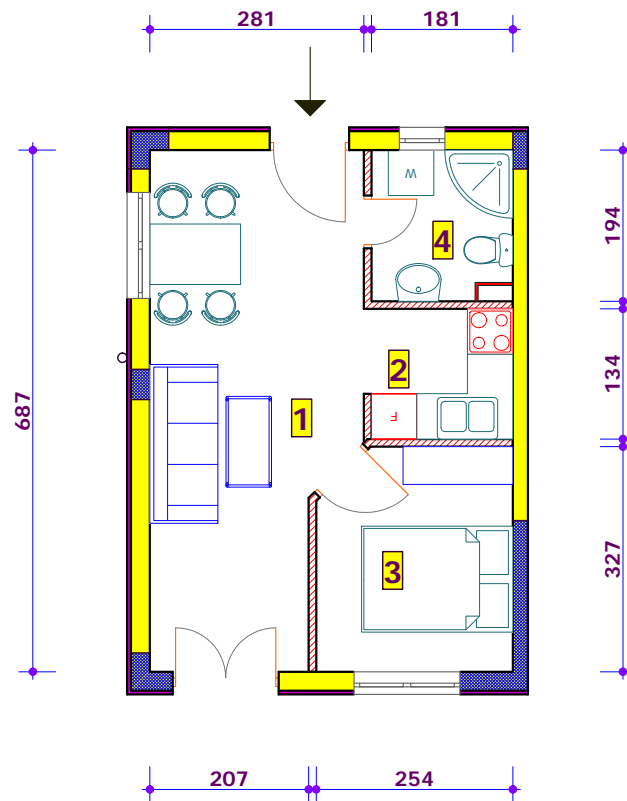
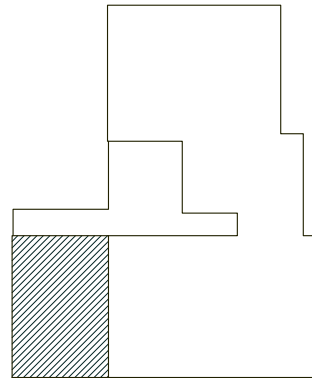


ODGOVORNO LICE:

MLADEN KOVAČEVIĆ, dipl.ing.arh.
Br.licence: UPI 107/7-457/2

PRIZEMLJE - PD1

LIST NEPOKRETNOSTI 2136
BROJ PARCELE 4517/1
BROJ OBJEKTA 1
BROJ STANA PD 1
POZICIJA STANA: SPRAT P ULAZ 1

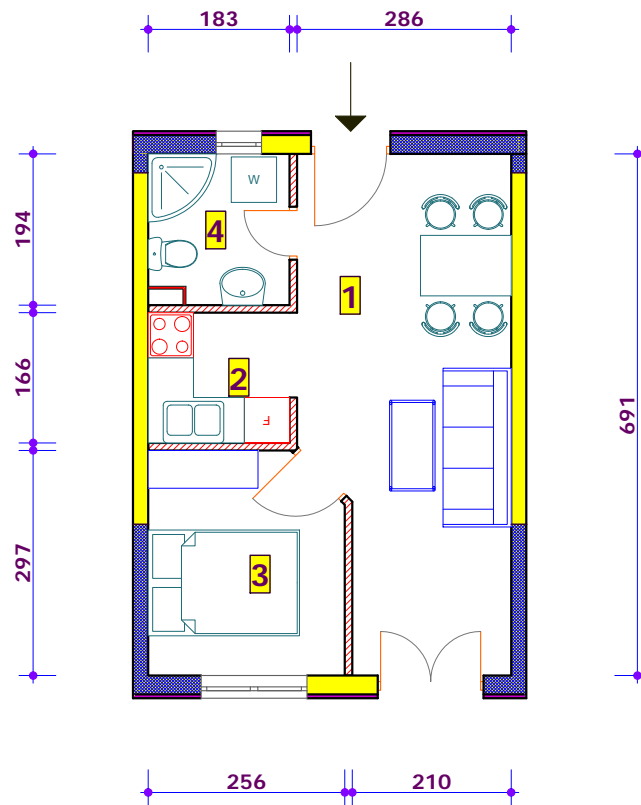
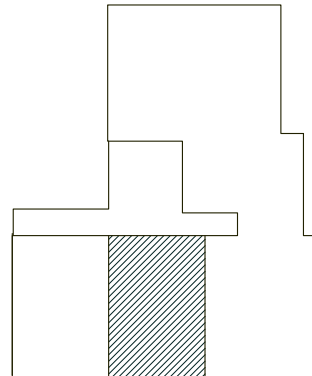


STAN PD1			
1.1.	DNEVNI BORAVAK	17.06	m2
1.2.	KUHINJA	2.41	m2
1.3.	SPAVAĆA SOBA	8.10	m2
1.4.	KUPATILO	3.47	m2
	UKUPNO:	31.04	m2

Žitnik Srećko, d.i.a.

PRIZEMLJE - PD2

LIST NEPOKRETNOSTI 2136
BROJ PARCELE 4517/1
BROJ OBJEKTA 1
BROJ STANA PD 2
POZICIJA STANA: SPRAT P ULAZ 1

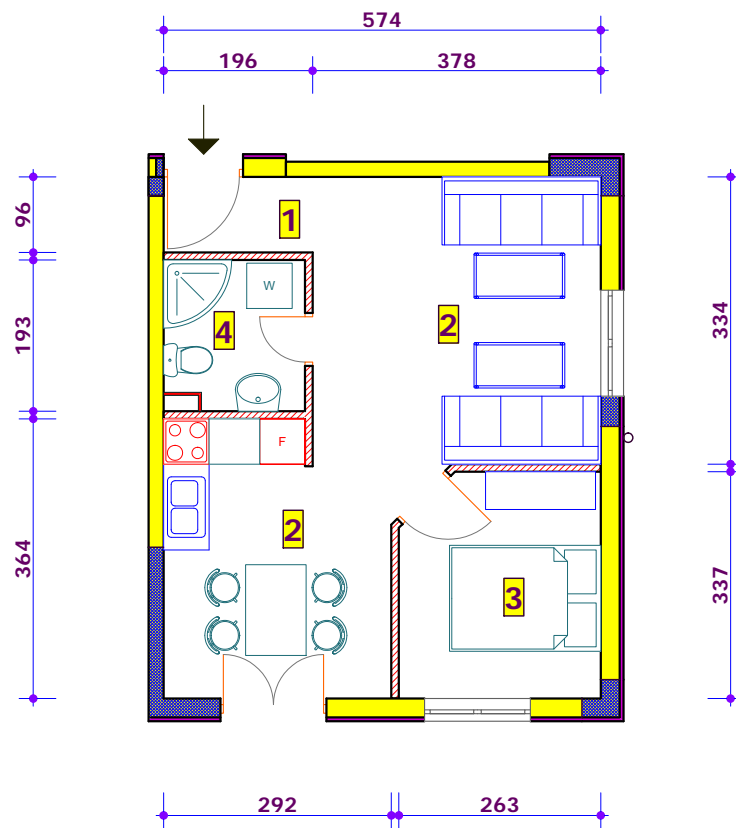
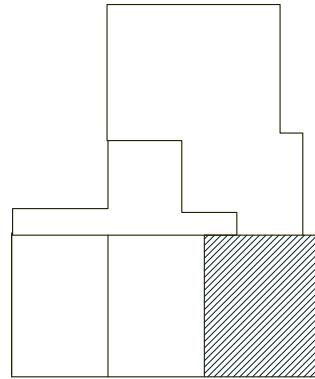


STAN PD2			
1.1.	DNEVNI BORAVAK	17.67	m2
1.2.	KUHINJA	3.04	m2
1.3.	SPAVAĆA SOBA	7.36	m2
1.4.	KUPATILO	3.51	m2
	UKUPNO:	31.58	m2

Žitnik Srećko, d.i.a.

PRIZEMLJE - PD3

LIST NEPOKRETNOSTI 2136
BROJ PARCELE 4517/1
BROJ OBJEKTA 1
BROJ STANA PD 3
POZICIJA STANA: SPRAT P ULAZ 1

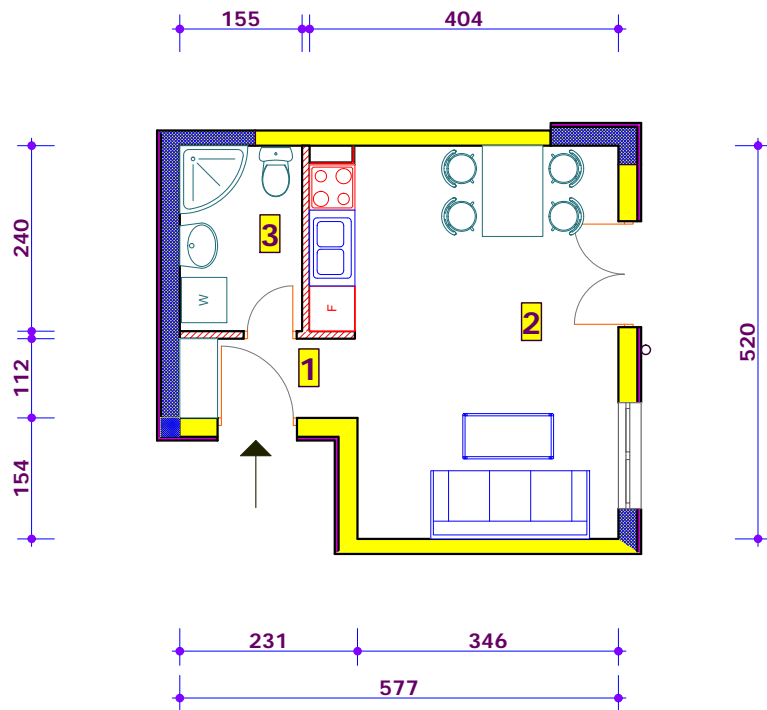
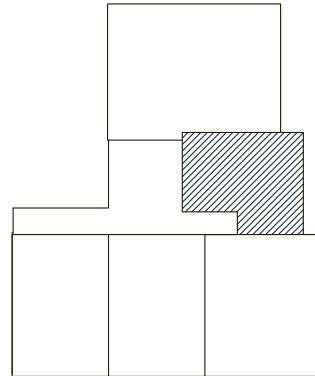


STAN PD3			
1.1.	DNEVNI BORAVAK/KUH.	25.19	m2
1.3.	SPAVAĆA SOBA	8.67	m2
1.4.	KUPATILO	3.44	m2
	UKUPNO:	37.30	m2

Žitnik Srećko, d.i.a.

PRIZEMLJE - PD4

LIST NEPOKRETNOSTI 2136
BROJ PARCELE 4517/1
BROJ OBJEKTA 1
BROJ STANA PD 4
POZICIJA STANA: SPRAT P ULAZ 1

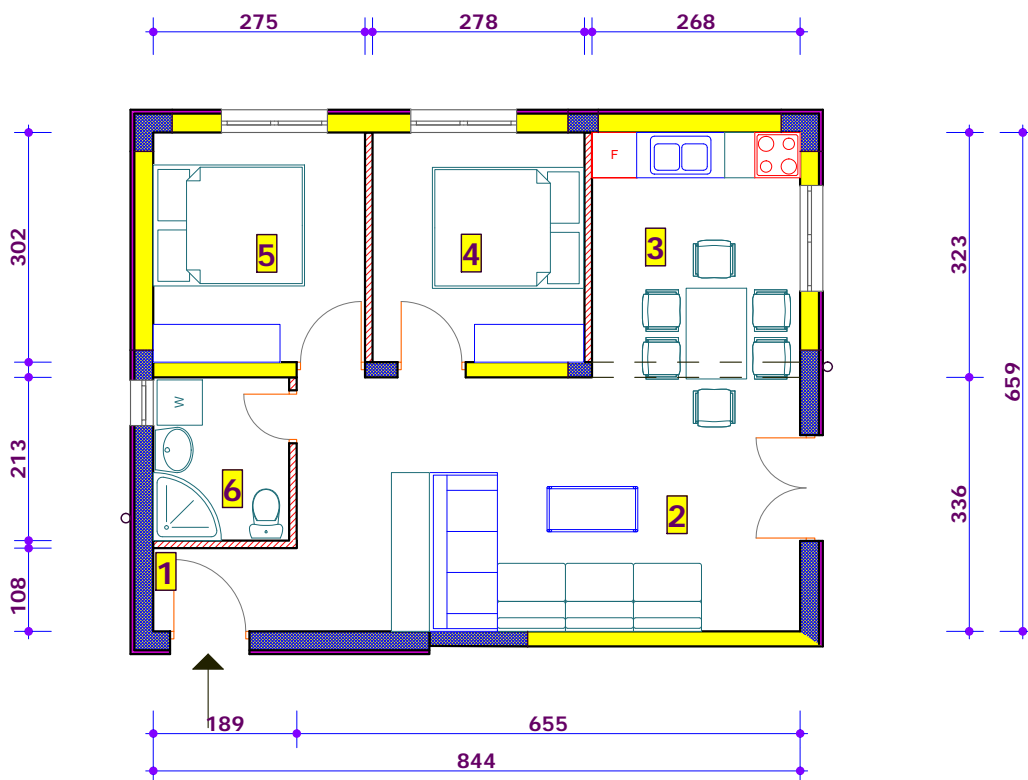
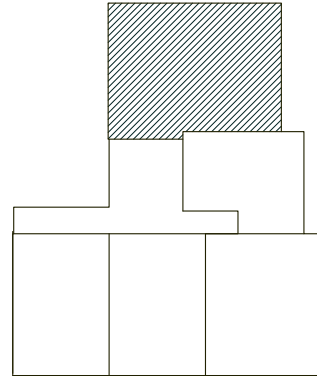


STAN PD4			
1.2.	DNEVNI BORAVAK/KUH.	21.93	m2
1.4.	KUPATILO	3.72	m2
	UKUPNO:	25.65	m2

Žitnik Srećko, d.i.a.

PRIZEMLJE - PD5

LIST NEPOKRETNOSTI 2136
 BROJ PARCELE 4517/1
 BROJ OBJEKTA 1
 BROJ STANA PD 5
 POZICIJA STANA: SPRAT P ULAZ 1

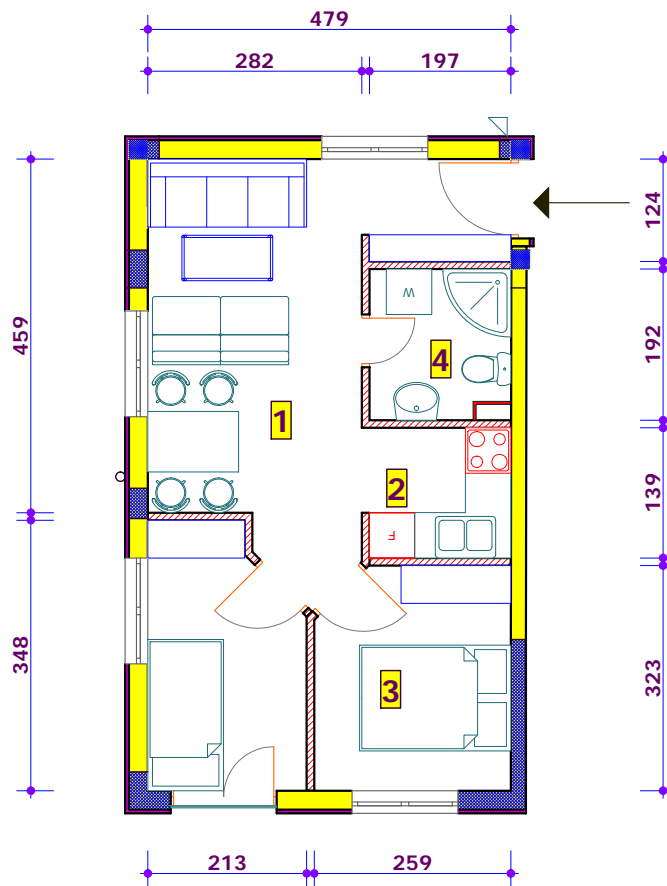
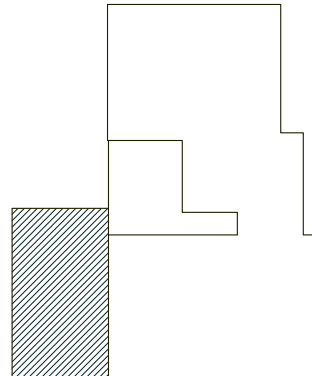


STAN PD5			
1.1.	DNEVNI BORAVAK/KUH.	32.75	m2
1.2.	SPAVAĆA SOBA	8.37	m2
1.3.	SPAVAĆA SOBA	8.30	m2
1.4.	KUPATILO	3.64	m2
	UKUPNO:	53.06	m2

Žitnik Srećko, d.i.a.

I SPRAT - PD6

LIST NEPOKRETNOSTI 2136
BROJ PARCELE 4517/1
BROJ OBJEKTA 1
BROJ STANA PD 6
POZICIJA STANA: SPRAT P1 ULAZ 1

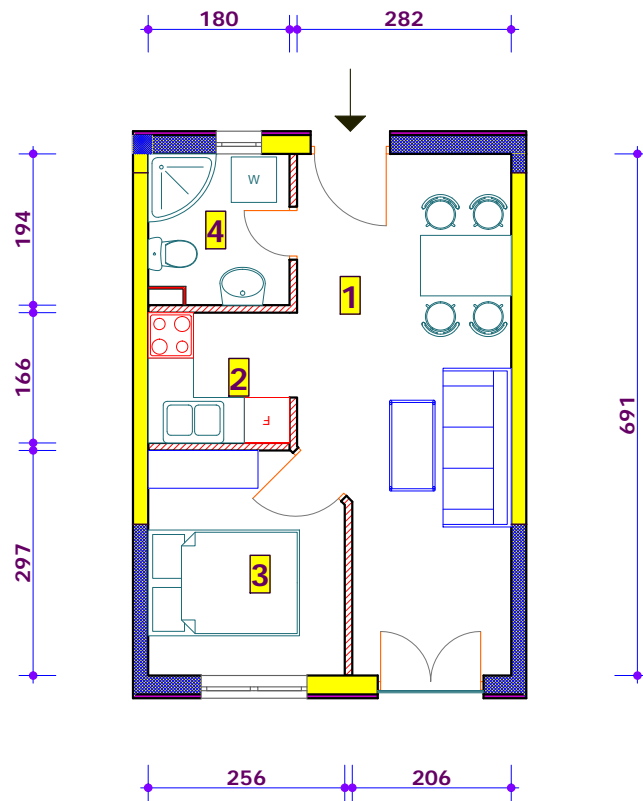
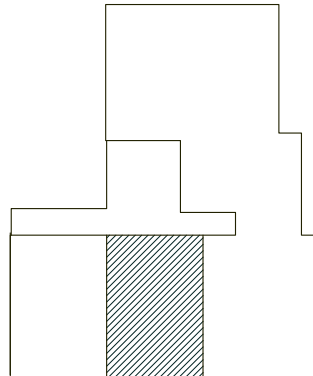


STAN PD6			
2.1.	PREDPROSTOR	16.35	m2
2.2.	KUHINJA	2.52	m2
2.3.	SPAVAĆA SOBA	8.05	m2
2.4.	SPAVAĆA SOBA	6.83	m2
2.5.	KUPATILO	3.39	m2
	UKUPNO:	37.14	m2

Žitnik Srećko, d.i.a.

I SPRAT - PD7

LIST NEPOKRETNOSTI 2136
BROJ PARCELE 4517/1
BROJ OBJEKTA 1
BROJ STANA PD 7
POZICIJA STANA: SPRAT P1 ULAZ 1

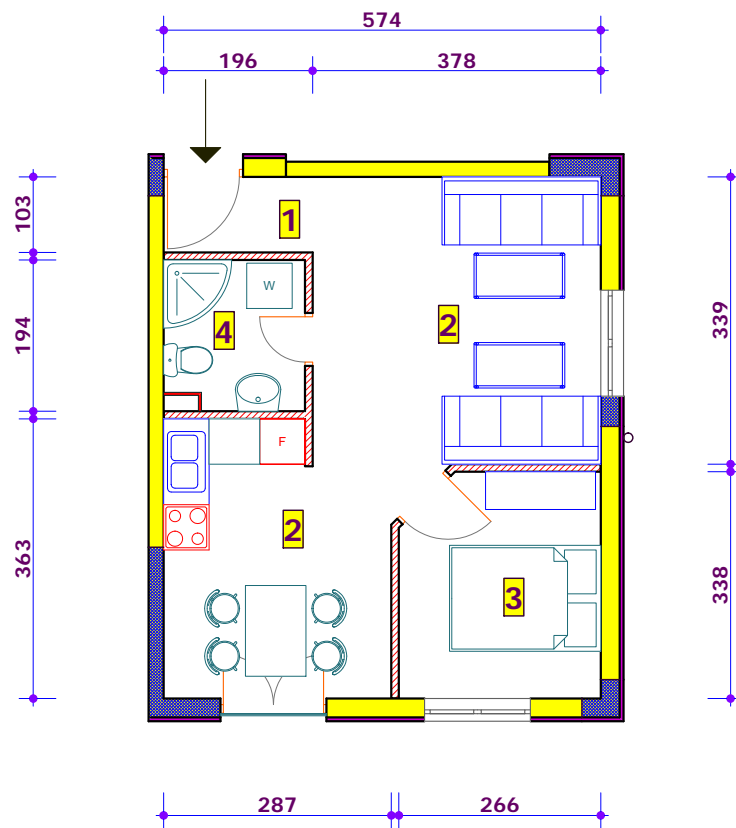
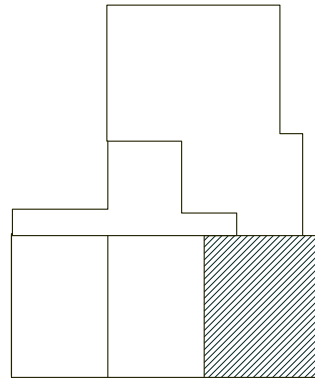


STAN PD7			
2.1.	DNEVNI BORAVAK	17.38	m2
2.2.	KUHINJA	2.97	m2
2.3.	SPAVAĆA SOBA	7.45	m2
2.4.	KUPATILO	3.42	m2
	UKUPNO:	31.22	m2

Žitnik Srećko, d.i.a.

I SPRAT - PD8

LIST NEPOKRETNOSTI 2136
BROJ PARCELE 4517/1
BROJ OBJEKTA 1
BROJ STANA PD 8
POZICIJA STANA: SPRAT P1 ULAZ 1

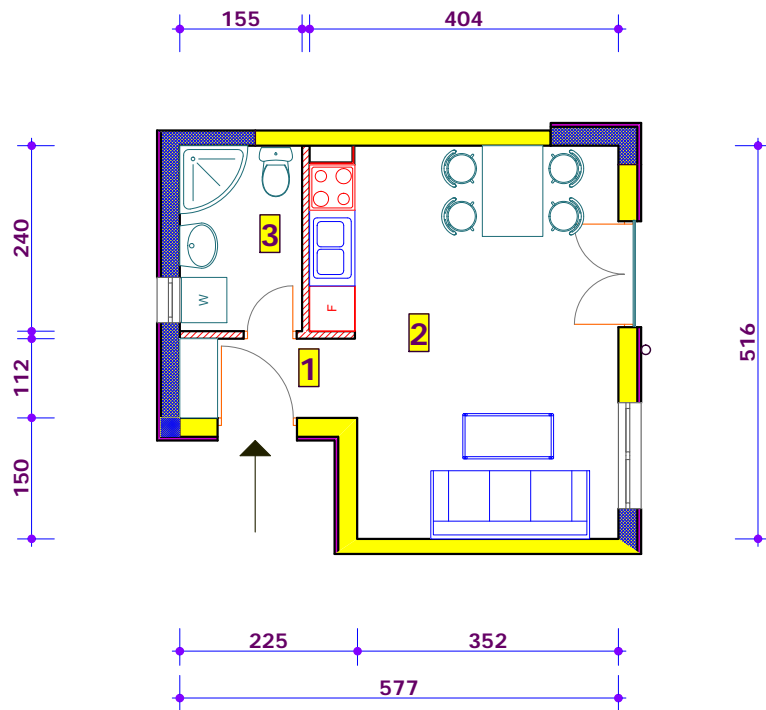
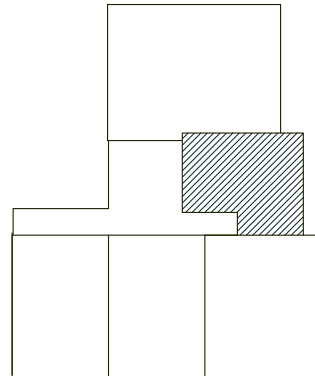


STAN PD8			
2.1.	DNEVNI BORAVAK/KUH.	25.32	m2
2.2.	SPAVAĆA SOBA	8.79	m2
2.3.	KUPATILO	3.42	m2
	UKUPNO:	37.53	m2

Žitnik Srećko, d.i.a.

I SPRAT - PD9

LIST NEPOKRETNOSTI 2136
BROJ PARCELE 4517/1
BROJ OBJEKTA 1
BROJ STANA PD 9
POZICIJA STANA: SPRAT P1 ULAZ 1

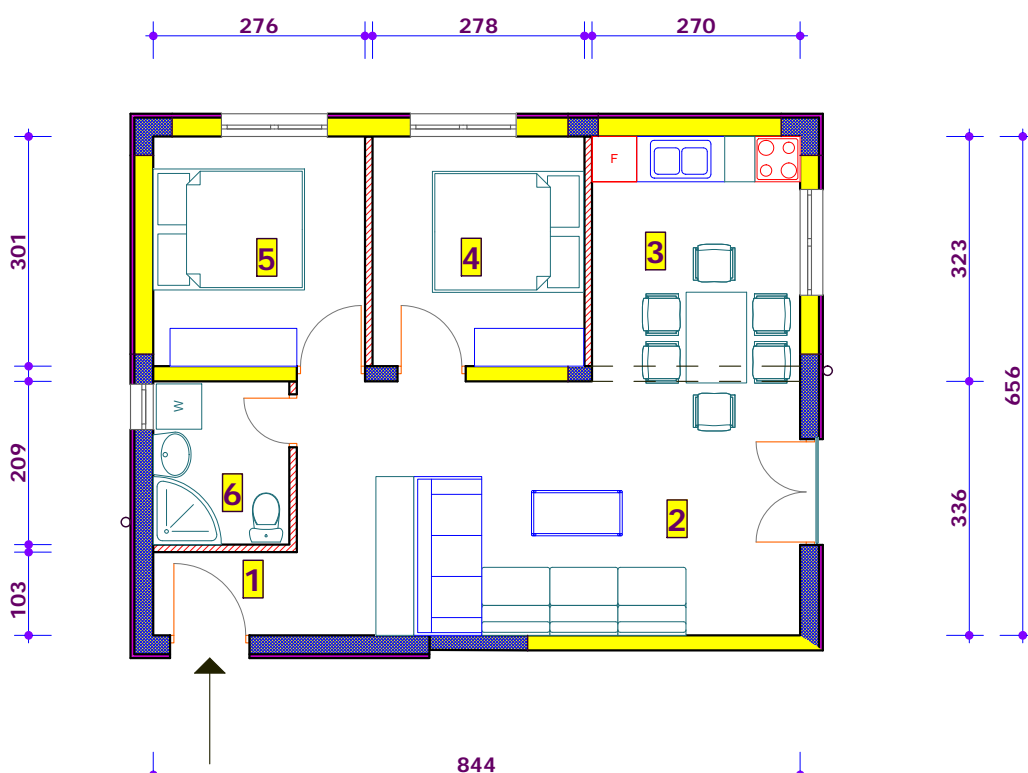
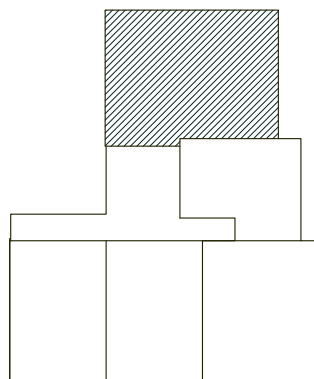


STAN PD9			
2.1.	DNEVNI BORAVAK/KUH.	21.84	m ²
2.2.	KUPATILO	3.72	m ²
	UKUPNO:	25.56	m ²

Žitnik Srečko, d.i.a.

I SPRAT - PD10

LIST NEPOKRETNOSTI 2136
 BROJ PARCELE 4517/1
 BROJ OBJEKTA 1
 BROJ STANA PD 10
 POZICIJA STANA: SPRAT P1 ULAZ 1



STAN PD10			
2.1.	DNEVNI BORAVAK/KUH.	32.49	m2
2.4.	SPAVAĆA SOBA	8.34	m2
2.5.	SPAVAĆA SOBA	8.31	m2
2.6.	KUPATILO	3.65	m2
	UKUPNO:	52.79	m2

Žitnik Srećko, d.i.a.